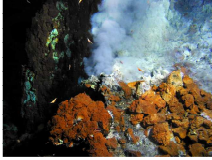


Photos



Hydrothermal vent
(Brothers seamount)
NIWA



Remnant hydrothermal vent chimneys and bed of
stalked barnacles
(Clark seamount, southern Kermadec)
NIWA



Brisingid seastar
(Fiordland)
NIWA



Black coral and Brisingid seastar
(Fiordland)
NIWA



Scorpionfish and anemone
(Giggenbach seamount)
NIWA



Bed of mussels
NIWA



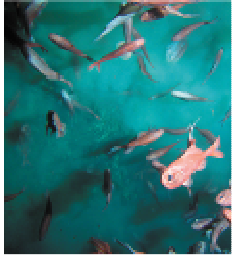
Bed of Bathymodiolid mussels
(Giggenbach seamount, Kermadec)
NIWA



Spotted black groper

(Giggenbach seamount, close to Kermadec Islands,
100-150 metres depth)

NIWA



Schooling orange roughy

NIWA



Hapuku

(Rumble III seamount)

NIWA



Deepwater rock lobster, *projasus pakeri* and brittle star
(Rumble V seamount, Kermadec ridge)

NOAA



Grenadier cod and sea pen

(Rumble V seamount, Kermadec ridge)

NOAA



Soft coral *Anthomastus robustus*

(Rumble V seamount, Kermadec ridge)

NOAA



Sea urchins *Dermechinus sp.*
(Rumble V seamount, Kermadec ridge)
NOAA



Spider (Deepwater) Crab
NIWA



Macruronus carinata, one of the many species of rattail
(Sub-Antarctic)
NIWA



Stony coral, *Solenosmilia variabilis*, and sea urchin,
Pseudechinus sp.
(Macquarie Ridge region)
NIWA
